

## From the President—

Through the programs described in this brochure, Berea Faith Community Outreach responds to a wide range of needs and relies on dedicated volunteers to administer the programs. Behind those volunteers are many organizations, businesses and individuals, representing virtually every part of our community, all committed to meeting the needs of people in southern Madison County. We deeply appreciate this wonderful spirit of people working together!

Heather McNew Schill



## 2010 Board of Directors:

Heather McNew Schill, President  
Rev. Charles Bertrand, Vice-President  
Betty Hibler, Secretary  
Patty Boyce, , Treasurer  
Rev. Kent Gilbert  
Pat Hickey  
Dr. Ed McCurley  
Peg Morrow  
Laura Robie  
Lois Tevis  
Jerry Workman

# BFCO

## Berea Faith Community Outreach, Inc.

With financial and in-kind support from local churches, businesses, individuals and Berea College programs, **BFCO** administers three aid programs to meet the housing, nutritional, and other material needs of at-risk individuals and families from southern Madison County.

### **Bereans United for Utility & Rent Relief**

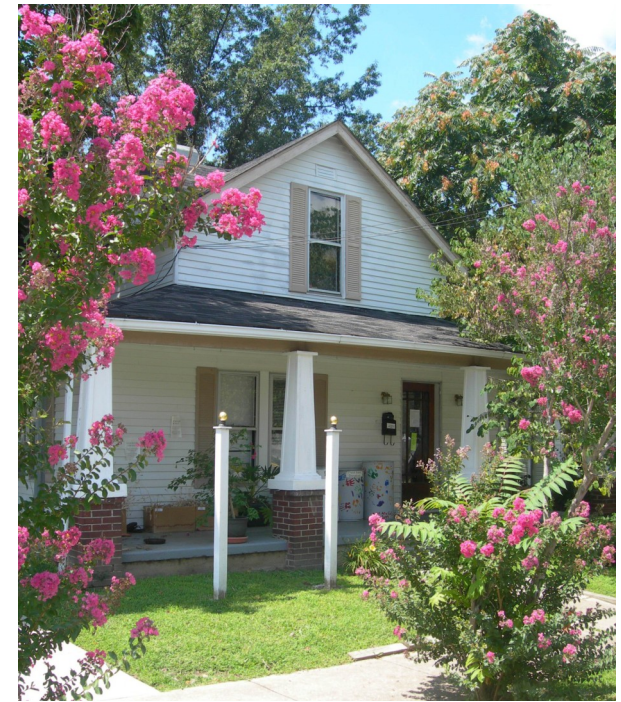
**(BUURR)** provides partial assistance with rent and utility bills. Those in need are eligible for assistance once a year.

**The Berea Food Bank** provides those in need with groceries for several days, in proportion to family size. Families or individuals may receive assistance up to three times in a six month period.

**The Frank Gailey Transient Aid Fund** is a voucher program that provides emergency assistance for food, gas, and some overnight housing for families or individuals passing through Berea. Vouchers can be obtained at participating churches and are then validated at the police dispatcher's office.



## Berea Faith Community Outreach, Inc. Annual Report 2010



103 Parkway  
Berea, KY 40403  
859-985-1903

## BFCO 2010 -- Year at a Glance

Berea Faith Community Outreach, Inc. (BFCO) continued to receive generous support from our community and beyond during 2010. In June, the Bonner Foundation of Princeton, NJ, held the 20th Anniversary Celebration of the Bonner Scholars Program, a community-service-based program that began at Berea College in 1990. Students and program staff from campuses around the country gathered in Berea and the Food Bank was one of several volunteer sites. Over three days, a volunteer team worked to prepare and plant several raised bed gardens on the front lawn of the Food Bank, under the direction of the local student staff at the Food Bank. In addition, they helped out in the warehouse and learned about Food Bank operations from Coordinator Jerry Workman.

Local need for food, utility and rent assistance, and transient aid remained high in 2010 and the total number of family units served by the assistance programs was 1,199, closely mirroring that of 2009. Assistance came from many quarters. The annual community-wide food drives by the Postal Workers in May and the Hunger Hurts Food Drive in November were supplemented by individual and group donations from private, religious, non-profit and business sectors. Monetary donations supported utility and rent assistance (BUURR) and the Transient Aid programs, as well as the Food Bank.

BFCO applied for and received three grants in 2010: \$5,000 Bonner Foundation Crisis Ministry Grant for food purchases; \$2,500 St. Joseph Berea Foundation Creating Healthier Communities Grant; and \$3,000 Madison County Fiscal Court Grant. Additional cash contributions of \$41,353 came from individuals or groups in our community, plus in-kind food donations valued at \$193,757. We are

especially grateful to local gardeners, the Berea Farmers' Market, and the Berea College garden for fresh produce during the growing season.

BFCO continues to operate at 103 Parkway in Berea, KY. Jerry Workman completed his ninth year as the Food Bank Coordinator and Peg Morrow her fourth year as BUURR Coordinator. The Berea College Labor Program provides several student workers and our valuable community volunteers complete the staff. A volunteer Board of Directors oversees the operation of BFCO.

The BFCO Board of Directors extends a sincere thank-you to the Berea community for your continued support.

### Where Did the Food Come From?

- Community-wide Food Drives (Postal Workers and CELTS)
- Churches -- regular or occasional collection of non-perishable items
- Berea College
  - Library "Food for Fines" program
  - Food Service - "Can Contests" on campus
  - Empty Bowls and other Service-Learning Projects
  - Clubs and Organizations
  - College Garden
- Family Resource Centers' collection of special items
- Local grocers - specials on food or donations of over-stocked items
- God's Pantry, Lexington - Bulk food at low price; free items as available
- Berea Farmers' Market and local gardeners
- Other local organizations and businesses
- Community members

### Where Did the \$\$ Come From?

- Community Events:
  - Community Thanksgiving Eve Service
  - Flyer and envelope attached to Hunger Hurts Food Drive bags
  - Community Good Friday service
- Churches - annual and/or special offerings
- Local businesses
- Grants: Bonner Foundation, St. Joseph Berea Foundation, Madison County Fiscal Court
- Individual gifts

## 2010 Financial Statement

### Income

Local cash contributions	\$41,353
Grants	10,500
Interest from bank account	53
In-kind food donations	<u>193,757</u>
<b>Total</b>	<b>\$245,663</b>

### Expenses

* Support to families	\$219,250
Food purchases	19,688
** Administrative	<u>3,561</u>
<b>Total</b>	<b>\$239,289</b>

\* Detail on support for families by program:

	# families	\$ amount
BUURR	235	17,802
Food Bank	888	199,270
Transient Aid	<u>76</u>	<u>2,178</u>
<b>Total</b>	<b>1,199</b>	<b>\$219,250</b>

**\*\*More than 97% of BFCO's income goes directly to families assisted by the 3 programs.** This is possible because there are no salaries and all other expenses kept to just \$3,561.

